

MT-X1740SLT

TECHNICAL DATA SHEET



 **MANITOU**

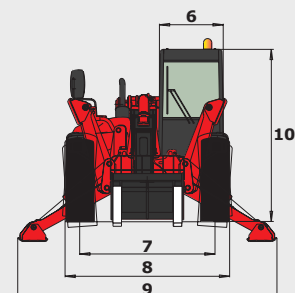
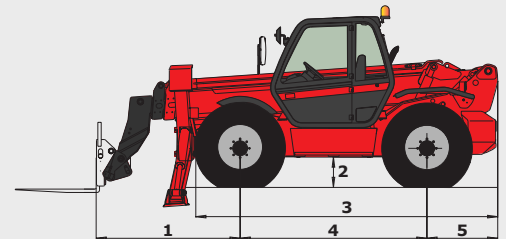
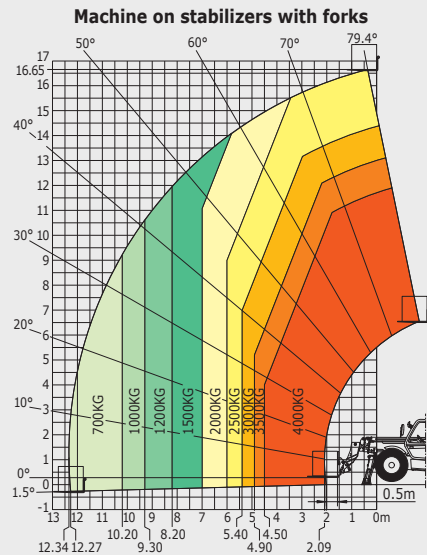
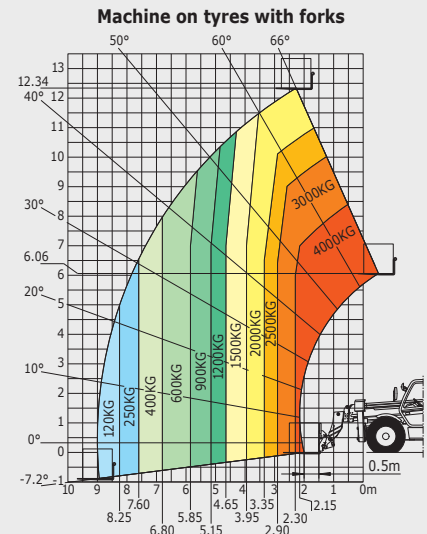
www.manitou.com

MT-X1740SLT

MT-X 1740 SLT

MT-X 1740 SLT	
Lifting	
Max. capacity	4000 kg
Max. lifting height	16.65 m
Reach at max. height	2.30 m
Break-out force with bucket	7000 daN
Unladen time	
Lifting	15 secs
Lowering	10 secs
Extension	32.3 secs
Retraction	27.5 secs
Crowd	5.3 secs
Dump	8.4 secs
Tyres	
	440/80-24
Braking	
	hydraulic multiple-disk brake with oil bath on front and rear axles
Engine	
Type	1104D-44 TA
Cubic capacity	4400 cm ³
Power	101 HP/74.5 kW
Max. torque	410 Nm - 1400 rpm
Injection	direct
Cooling	water
Laden drawbar pull	9700 daN
Transmission	
	torque converter
Reversing shift	electrohydraulic control
Number of gears (forward/reverse)	4/4
Max. travel speed (may vary according to applicable regulations)	27 kph
Hydraulics	
Pump	gear type with flow splitter 164 l/min - 260 bar
Capacities	
Hydraulic oil	175 l
Fuel	135 l
Unladen weight (with forks)	
	11220 kg
Dimensions	
1. Front wheel centre to carriage	2.16 m
2. Ground clearance	0.48 m
3. Overall length to front tyres	4.44 m
4. Wheelbase	2.77 m
5. Rear wheel centre to rear face	1.05 m
6. Overall width of cab	0.95 m
7. Inside tyre width	1.99 m
8. Overall width	2.43 m
9. Overall width (stabilizers lowered)	3.82 m
10. Overall height	2.61 m
Turning radius (over tyres)	4.17 m
Carriage rotation (crowd/dump)	12°/112°
Noise and vibration	
Noise at driving position (LpA)	83.6 dB
Environmental noise (LwA)	106 dB
Vibration to whole hand/arm	<2.5 m/s ²
Vibration on driver's body	1.2 m/s ²

Rough terrain load chart
standard EN1459 B



This brochure describes versions and configuration options for Manitou products which may be fitted with different equipment. The equipment described in this brochure may be standard, optional or not available depending on version. Manitou reserves the right to change the specifications shown and described at any time and without prior warning. The manufacturer is not liable for the specifications given. For more information, contact your Manitou dealer. Non-contractual document. Product descriptions may differ from actual products. List of specifications is not comprehensive. The logos and visual identity of the company are the property of Manitou and may not be used without authorisation. All rights reserved. The photos and diagrams contained in this brochure are provided for information only.

MANITOU BP SA - Limited company with board of directors - Share capital: 39,547,824 euros - 857 802 508 RCS Nantes

