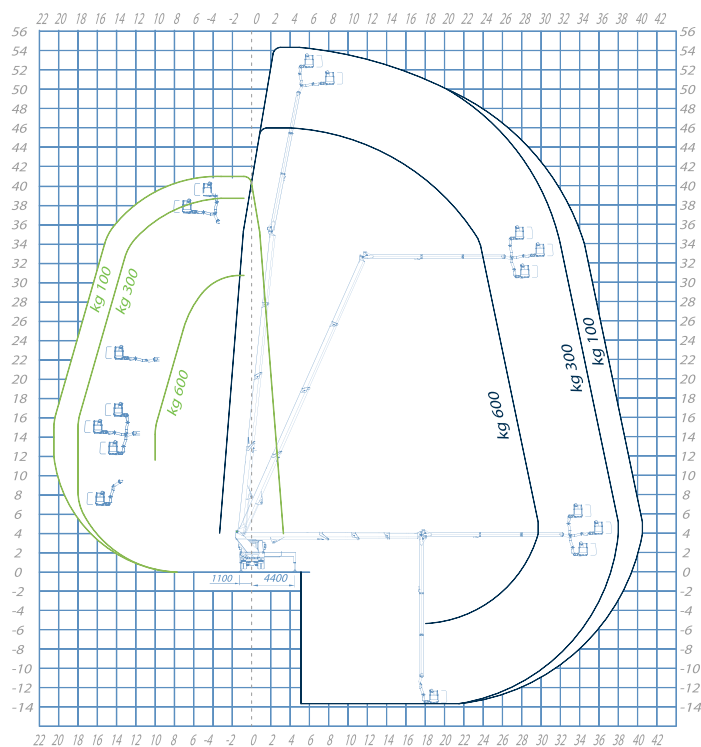


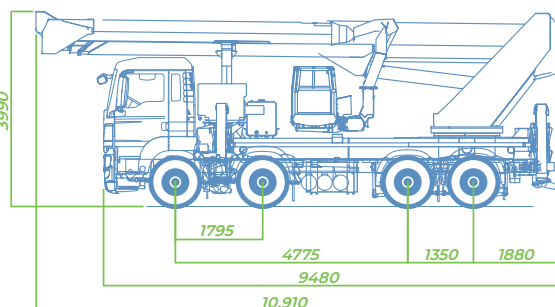
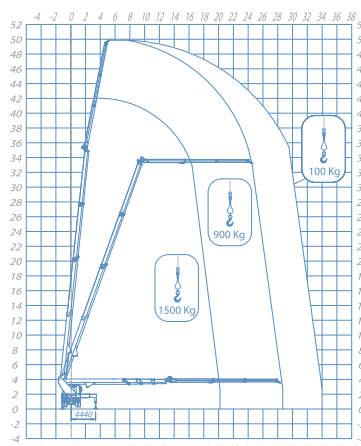


## WORKING DIAGRAM



● Working area with in-shape stabilization

● Maximum working area



## High performance

### STANDARD ACCESSORIES

#### DATA SHEET

- Extendable aluminum basket with dimensions 2300/3600x900x1100 mm
- SOCAGE convertible basket possibility (Eternit)
- Basket rotation 360°
- Rotation turret 700°
- 2nd Jib 180° manual rotation
- Possibility of winch on removable JIB
- Automatic stabilization
- Partially stabilized work areas
- Auto lock
- Basket control station with console on Socage design including joystick and 7" LCD display with real-time information
- Intercom with headphones for basket-ground communication
- Main and auxiliary motor start / stop control from the basket
- Multifunction radio remote control for emergency control of the aerial part from the ground and stabilization
- PTO automatic cut-off
- 2 fixed roto-lamp on the vehicle cabin
- Socket 230V / 400V
- Heat exchanger on the hydraulic system
- 2 folding sides, 2 fixed (h 150 mm)
- 4 plates to stand to the ground (700 x 700 x 50 mm)
- Anti-corrosion treatment on unpainted components

#### SAFETY DATA

- Emergency and stop button
- Cross check of open stabilizers
- Anemometer
- Load limiter in the basket
- Moment limiter with double safety and control of correct operation
- Multi axial device for visual control of frame stabilization
- Emergency descent with electric pump (in the absence of the auxiliary motor)
- Rotation brake of the turret with automatic insetion
- Hydraulic system with differentiated filtering with high efficiency filters both on the delivery lines and on the return lines
- Multifunction radio control for emergency control
- Automatism for rotation lock with extension of the stabilizers on one side only
- Chassis flatness sensor
- Flanged block valves



**OUTRIGGERS**  
Extensible HE + HE



**WORKING HEIGHT**  
54,3 mt



**BASKET HEIGHT**  
52,3 mt



**MAX OUTREACH**  
40 mt



**BASKET CAPACITY**  
600 kg



**BASKET SIZE**  
2300,3600x900x1100 mm



**CONTROLS**  
Electric



**TURRET ROTATION**  
700°



**GVW**  
26 ton / 32 ton