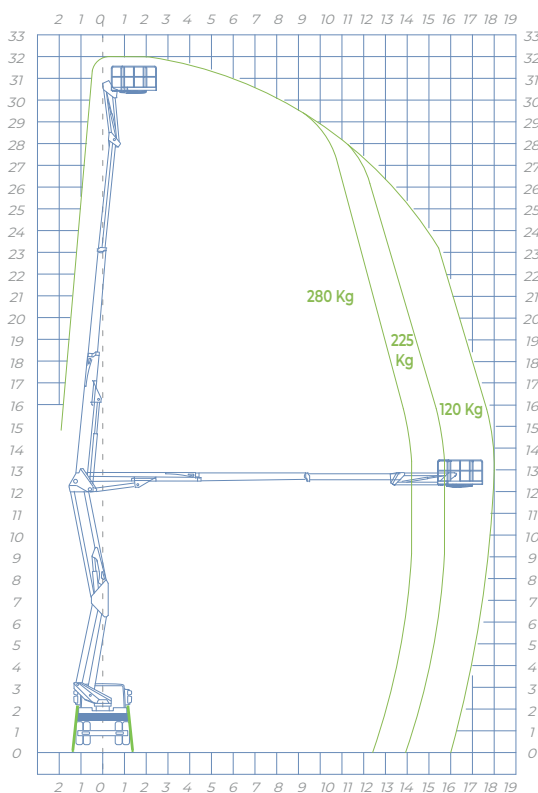




## WORKING DIAGRAM



- OUTRIGGERS**  
Extensible H+H
- WORKING HEIGHT**  
32 mt
- BASKET HEIGHT**  
30 mt
- MAX OUTREACH**  
18 mt
- BASKET LOAD CAPACITY**  
280 kg
- BASKET SIZE**  
1800 x 700 x 1100 mm
- CONTROLS**  
Electric
- TURRET ROTATION**  
700°
- GVW**  
12 ton

## STANDARD ACCESSORIES

### [a] AUTO STABILIZATION

The "SPEED" function is a new solution present in Socage's Aerial Working Platforms on Chassis. It brings great advantages including increasing safety and facilitating the correct use of the necessary stabilization maneuver to start working.

With a single button, even from the basket, it allows to obtain stabilization in a safe, simple and fast way, quickly overcoming the irregularities of the ground.

### DATA SHEET

- Aluminum basket: 1800 x 700 x 1100 mm
- Hydraulic rotation basket 90°+90°
- Rotation turret 700°
- Articulated final jib
- **SPEED automatic stabilization**
- **Automatic closing**
- Vertical stabilizers H+H with extra stroke
- Double or triple work area depending on the installation
- Automatic stabilization controls from the basket and from the ground regulation of all movements
- CAN BUS electronic management system
- Engine start / stop control from the basket
- Heat exchanger
- Digital hour counter
- 4 plates to stand to the ground
- Socket 230V
- Magnetic roto-lamp on the vehicle cabin
- Powder coated cataphoresis treatment
- Tool trunk
- Under-run
- 150mm aluminum sides

### SAFETY DATA

- Emergency and stop button
- Cross check of open stabilizers
- Multi axial device for visual control of frame stabilization
- Intelligent cabin anti-collision sensor
- Load limiter in the basket
- Moment limiting device with double security
- Emergency manual lamp
- Chassis flatness sensor
- Flanged block valves
- Differentiated filtering hydraulic system with high efficiency filters both on the delivery lines and on the return lines
- Automatic leveling of the basket
- PTO automatic cut-off
- Warning horn from the basket

