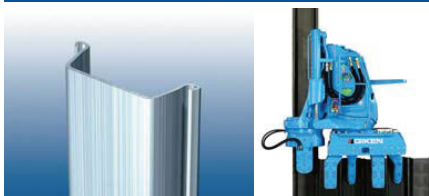


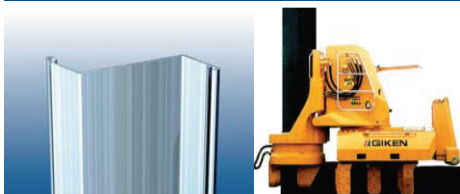
# SILENT PILER

## SILENT PILER

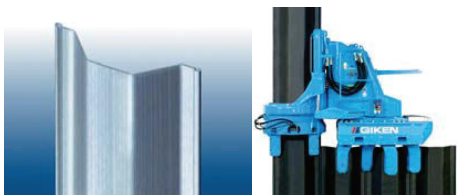
### U Sheet Pile



### Z Sheet Pile



### Hat Type Sheet Pile



### Tabular Pile

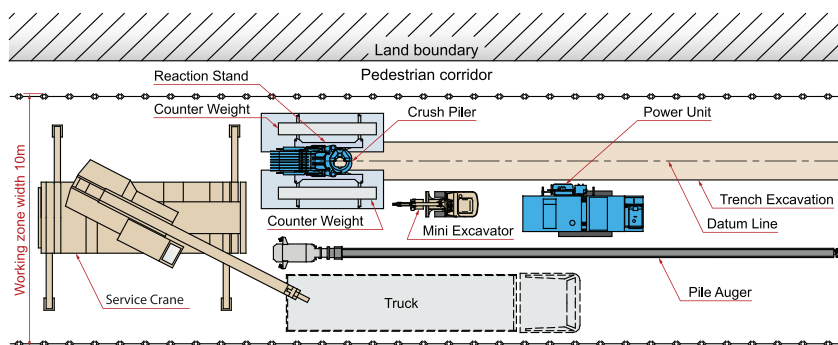


This hydraulic machine is capable of performing vibration-free installation and extraction of sheet piles. It operates by gripping previously driven piles to provide reaction force for pressing in the next pile. The Silent Piler works on top of the reaction piles and self-travels to the next position as illustrated below. This technique allows sheet pile driving at sites not accessible for conventional piling techniques. Only a relatively light-weight service crane is needed to pitch the sheet piles. Silent Piler fills an important niche in the sheet piling field.

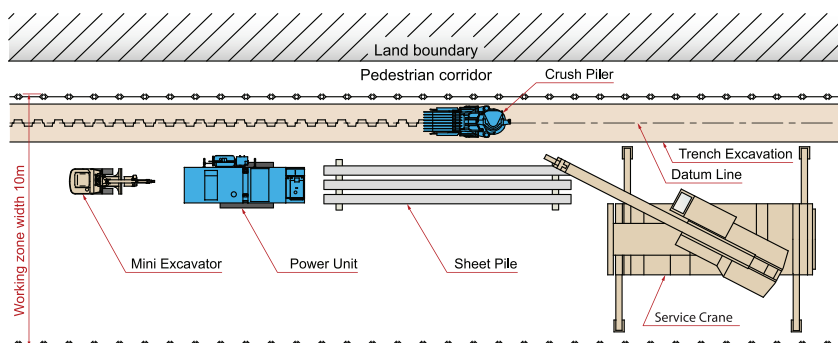
The silent piler unit allows for the installation and extraction of sheet piles in tight areas and where noise and vibration are unwelcome. For example: residential areas, hospitals, schools and where ground has been badly damaged and vibration could lead to further localised complications.

The silent piler unit comprises a powerful hydraulic press / sheet pile installation unit, which is coupled to remote, fully silenced, hydraulic power pack and generator units. The combined facility allows installation of sheet piles without the need to employ a vibrating power head, keeping noise to an absolute minimum and most importantly, vibration to zero.

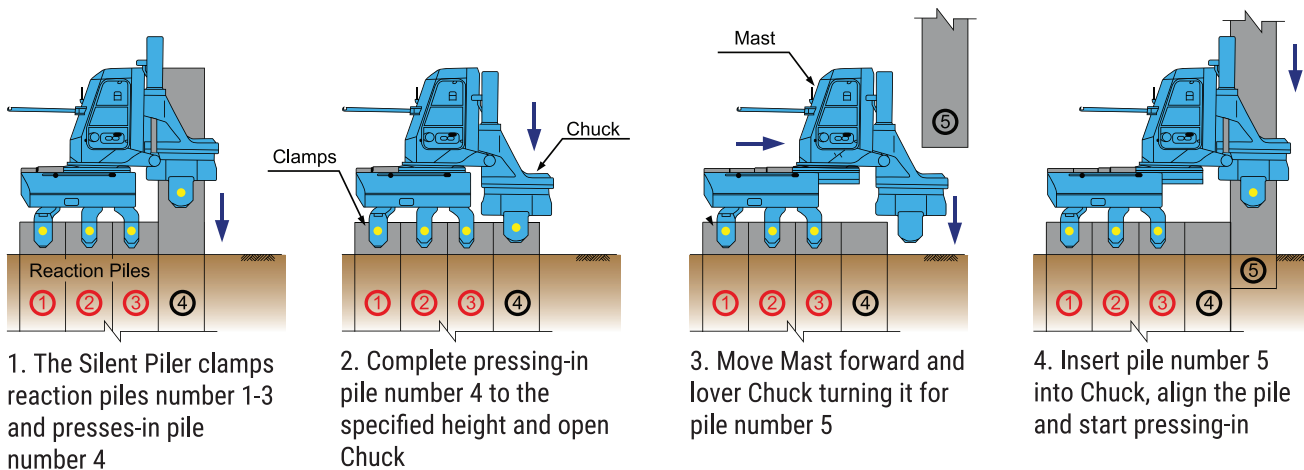
#### Initial Piling



#### Pile Installation



## PRESS-IN WORKING PROCEDURES



# SILENT PILER

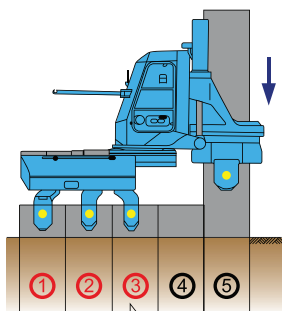


## SILENT PILER

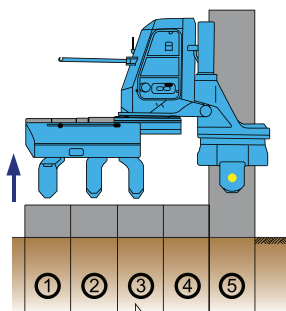
Silent Piler Model	U Section (width: mm)				Z Section (width: mm)		Hat Section (width: mm)	Tubular Pile (diameter: mm)						
	400	500	600	750	575 - 708		900	600	800	1000	1200	1500	2000	2500
					Single	Pair								
F101	✓													
F111	✓													
F201	✓	✓	✓											
F301-700			✓	✓	✓									
F301-700 (Combi-Gyro Mode)	Combi-Gyro Wall (Tube/Z and Tube/U)													
F301-900							✓							
F301-900 (Combi-Gyro Mode)	Combi-Gyro Wall (Tube/Hat)													
F301-G1000								✓	✓	✓				
F401-1400			✓*			✓								
F401-1400 (Combi-Gyro Mode)	Combi-Gyro Wall (Tube/Z)													
F401-G1200									✓	✓	✓			
F501-G1500									✓	✓	✓	✓		
GRV2540													✓	✓

\* Paired sections only

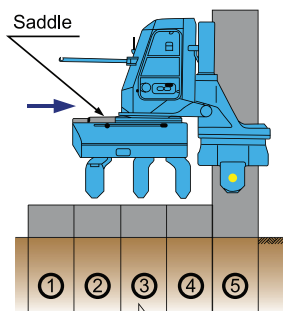
## SELF-WALKING PROCEDURES



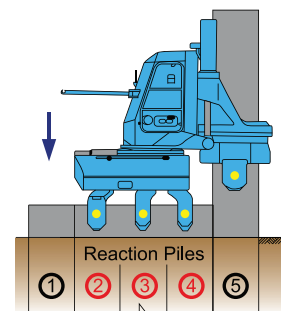
5. Press-in pile number 5 until the pile is sufficiently stable



6. Release Clamps from the reaction piles and raise the main body



7. Move Saddle forward to the next position on the reaction piles



8. Lower the main body onto reaction piles number 2-4 and clamp them to complete pressing-in pile number 5

● Shows hydraulic jaws of Chuck and Clamps closed.