



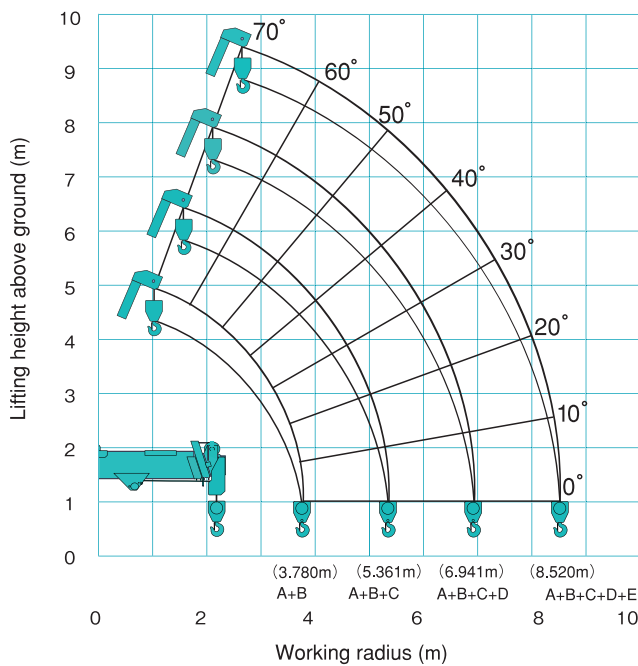
# SPIDER CRANE

## SPIDER CRANE

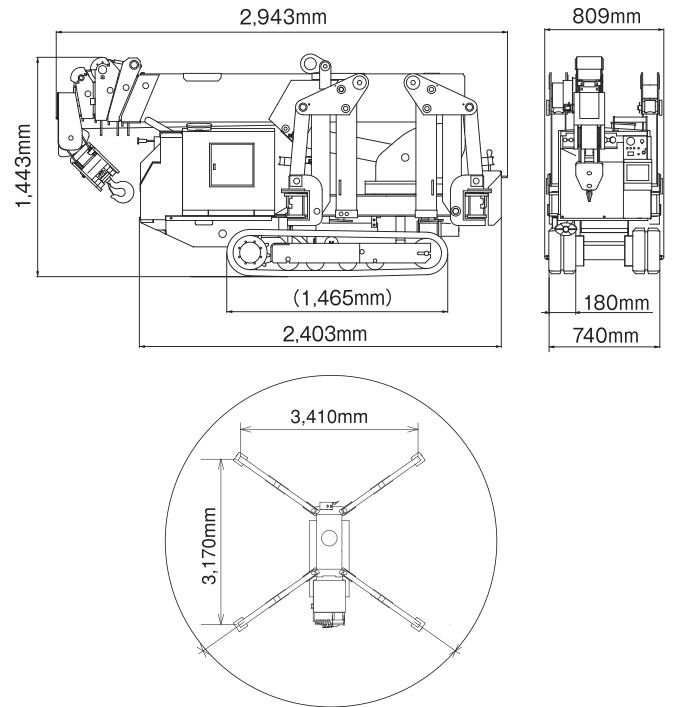


ITEMS	MAKER	R&B
SPIDER CRANE	MODEL	CR285D
	Boom Type	5 steps boom
	Max Lifting Height (On The Ground) (m)	8.7
	Max Working Radius (kg x m)	150 x 8.5
	Swing Angle/Time (Degree/sec)	360/16
	Travel Speed (km/h)	0 ~ 1.88
	Outrigger Max.Extended Width (mm)	3,410 x 3,170
	Crawler Ground (LxW) (mm)	1,170 x 180
	Fuel Tank (L)	20
	Dimensions (LxWxH) (mm)	2,943 x 809 x 1,443
	Weight (kg)	1,750 (2,150 kg with electric motor)

### Working range diagram



### Dimensions



Working radius and lifting height are based on unloaded condition, excluding deflection of the boom.

### Table of Total Rated Load [5-section boom]

When booms A and B are used

Working radius (m)	~1.5	2.0	2.5	3.0	3.5	3.7
Total rated load (t)	2.80	2.20	1.65	1.23	0.97	0.86

When booms A, B and C are used

Working radius (m)	~2.9	3.0	3.5	4.0	4.5	5.0	5.3
Total rated load (t)	1.25	1.22	0.97	0.77	0.61	0.53	0.47

When booms A, B, C and D are used

Working radius (m)	~3.6	4.0	4.5	5.0	5.5	6.0	6.5	6.9
Total rated load (t)	0.85	0.72	0.60	0.50	0.43	0.37	0.32	0.29

When booms A, B, C, D and E are used

Working radius (m)	~4.0	5.0	5.5	6.0	6.5	7.0	7.5	8.0	8.5
Total rated load (t)	0.55	0.33	0.28	0.25	0.22	0.21	0.18	0.17	0.15

※Figures in each table includes 23kg of hook block.

※There are different figures in some areas / directions. Refer to the operation manual for further detail.