

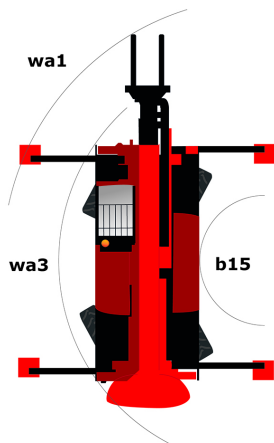
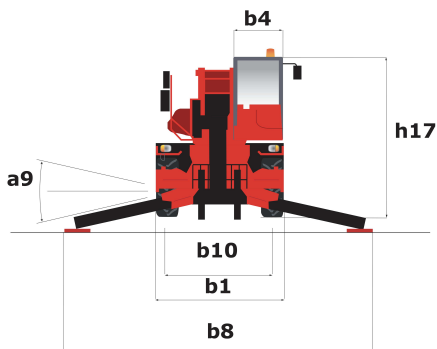
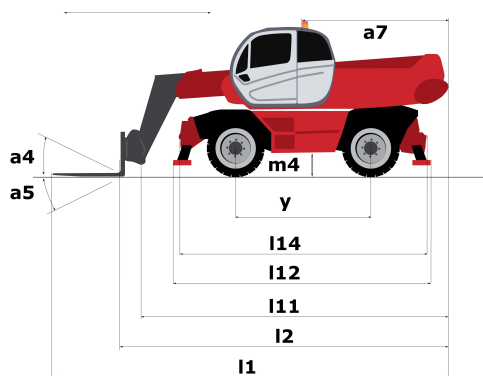
Technical sheet

MRT-X 1840 EASY 400

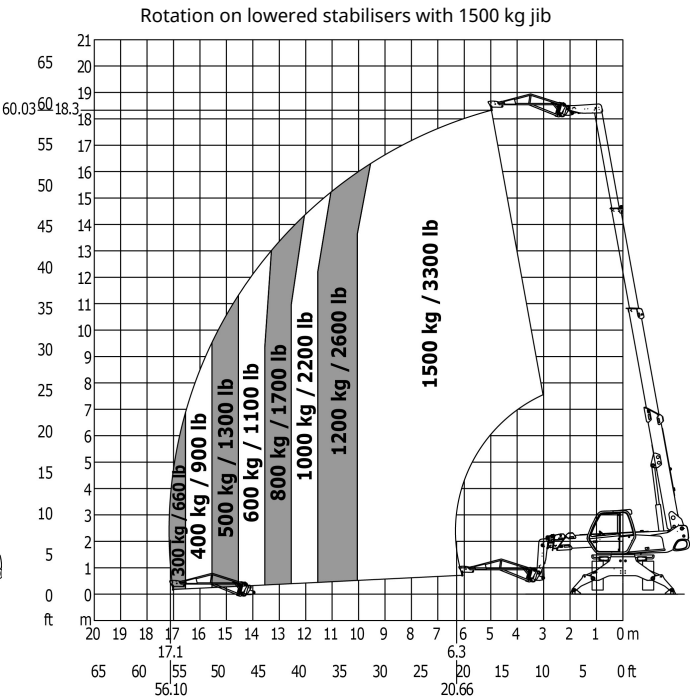
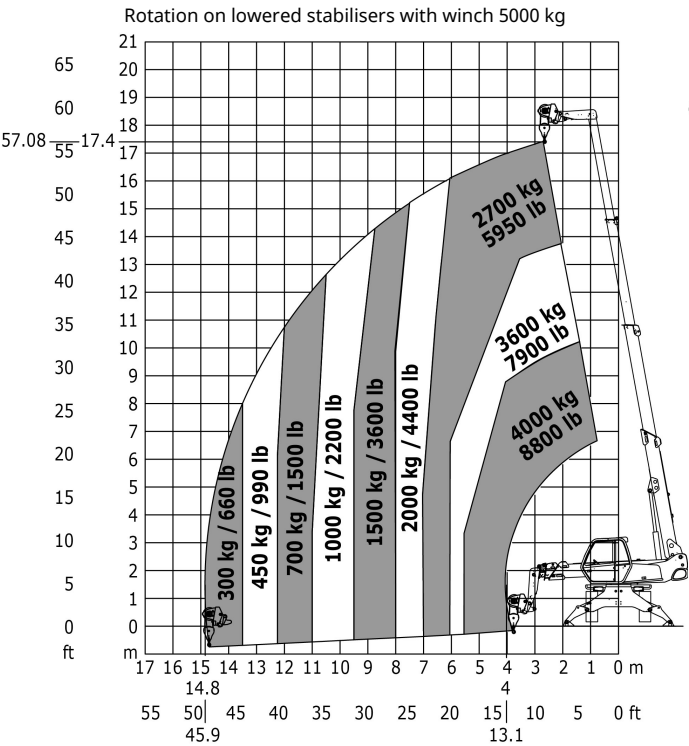
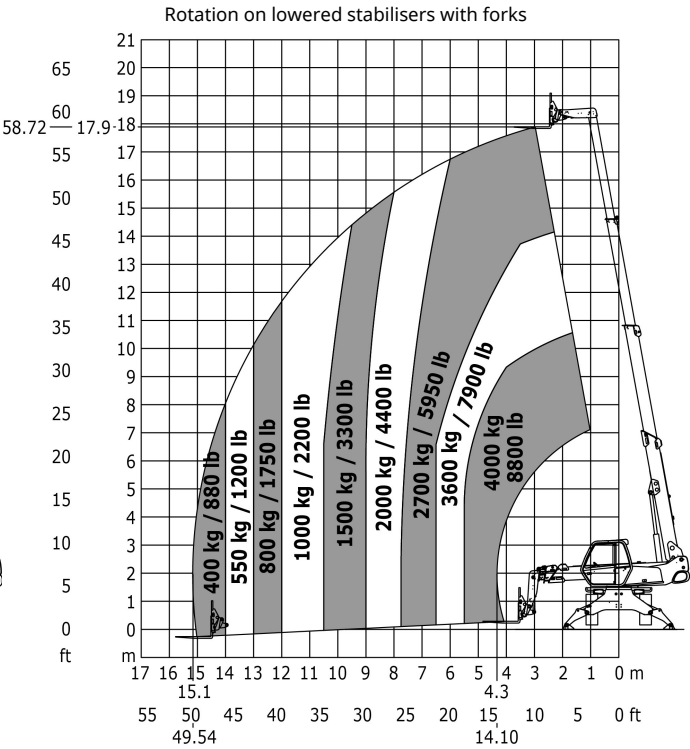
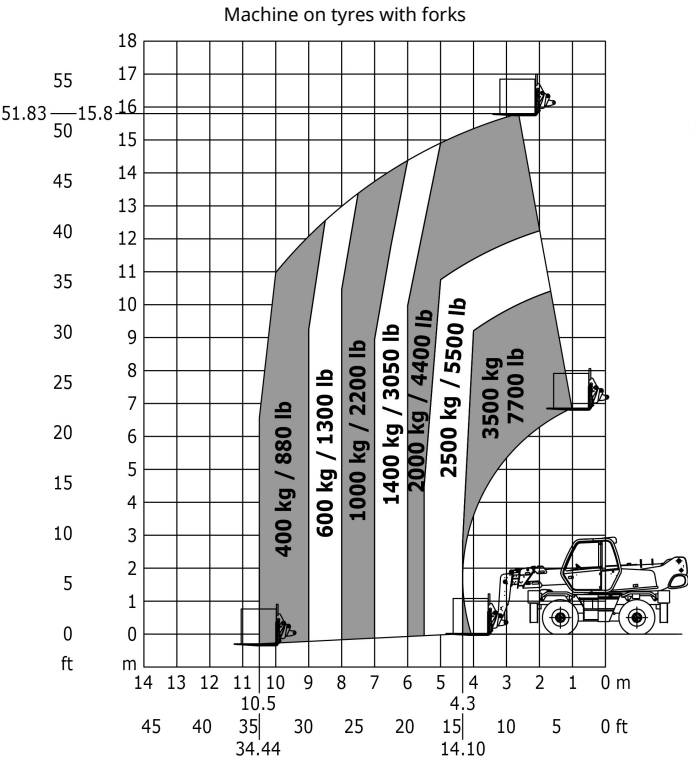
Rotating Telehandlers



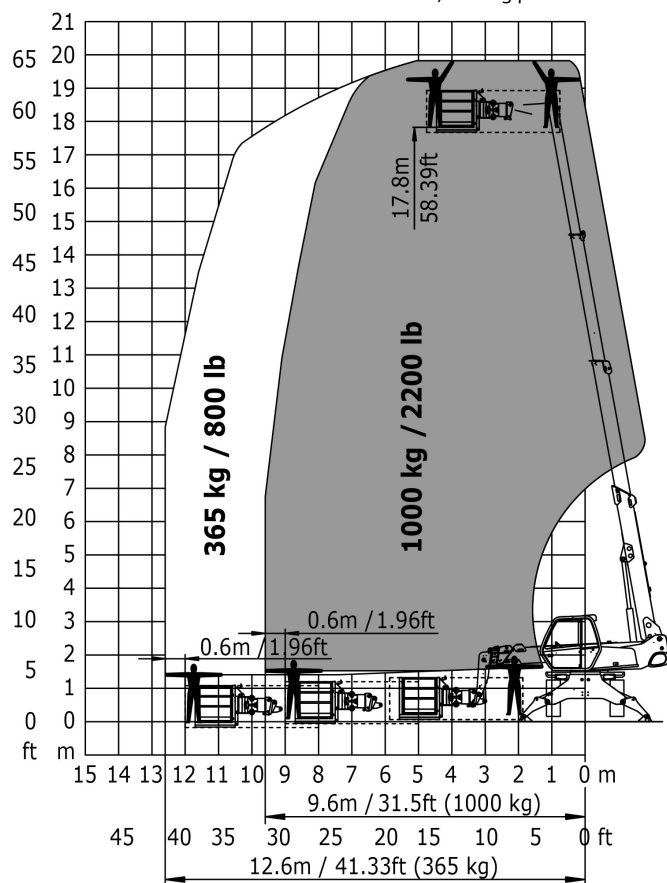
Capacities	Metric	Imperial
Max. capacity	4000 kg	8800 lbs
Max. lift height	17.90 m	58 ft 10 in
Max. reach	15.10 m	49 ft 7 in
Dimensions		
l2 - Length to fork heel	5.54 m	18 ft 2 in
l1 - Overall length	6.74 m	22 ft 1 in
b1 - Overall machine width	2.40 m	7 ft 10 in
b7 - Overall width with stabilisers extended	3.98 m	13 ft
h17 - Overall height	2.97 m	9 ft 9 in
Wa3 - - Frame outer turning radius	3.90 m	12 ft 1 in
m4 - Machine ground clearance	0.34 m	1 ft 1 in
a4 - Tilt-up angle	12 °	12 °
a5 - Tilt-down angle	105 °	105 °
Standard tyres	Pneumatic	Pneumatic
Standard forks	1200x150x50	47x6x2
Weight	13670 kg	30137 lbs
Stabilisers		
Type	Wing Type	Wing Type
Controls	Individual or Simultaneous	Individual or Simultaneous
Engine		
Brand	Perkins	Perkins
Environmental standards	1104D-44T	1104D-44T
Power	101 hp / 74.50 kW	101 hp / 74.50 kW
Max. torque	392 Nm at -	289 ft.lbs at -
Number of cylinders - Capacity	4 - 4400 cm³	4 - 268.50 in³
Injection	Direct	Direct
Cooling	by Water	by Water
Transmission		
Type	Hydrostatic	Hydrostatic
Max. speed of travel (may vary according to the applicable regulation)	32 km/h	19.80 mph
Drawbar pull	8600 daN	19333 lbf
Parking brake	Automatic negative parking brake	Automatic negative parking brake
Service brake	Hydraulic	Hydraulic
Hydraulics		
Type of pump	Gear pump	Gear pump
Hydraulic flow rate	115 l/min	34.30 gpm
Pressure	270 bar	3916 psi
Tank capacities		
Hydraulic oil	150 l	39.60 US gal.
Fuel	130 l	34.34 US gal.
Noise & vibration		
Noise at driving position (LpA)	79.70 dB(A)	79.70 dB(A)
Noise to environment (LwA)	104 dB(A)	104 dB(A)
Vibration on hands/arms	<2.5 m/s²	<8.2 ft/s²



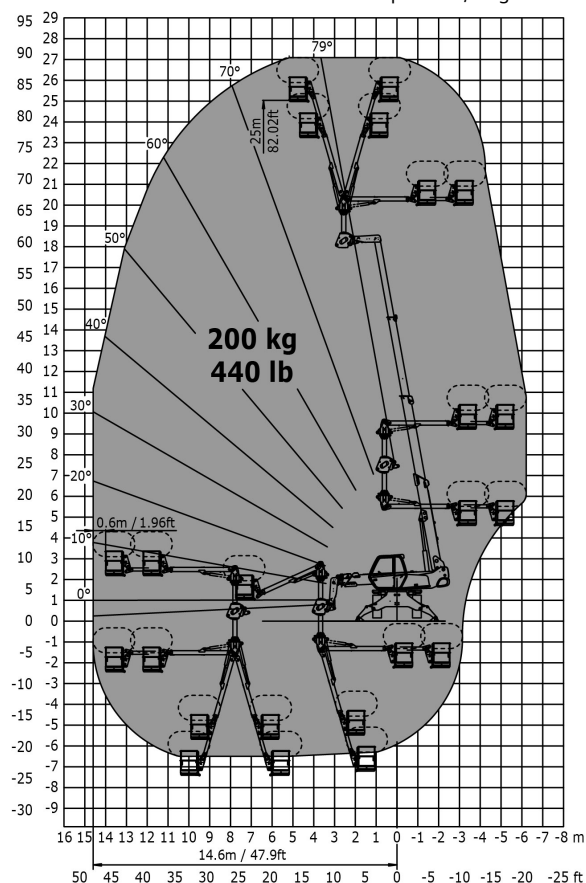
Other data	Metric	Imperial
l12 - Overall length at stabilisers	4.13 m	13 ft 8 in
b7 - Overall width with stabilisers extended	3.98 m	13 ft
b4 - Overall cab width	0.95 m	3 ft 1 in
l14 - Length of frame	4.35 m	14 ft 4 in
y - Wheelbase	2.32 m	7 ft 7 in
a4 - Tilt-up angle	12 °	12 °
a5 - Tilt-down angle	105 °	105 °
a7 - Counterweight offset (turret at 90°)	2.49 m	8 ft 2 in
b10 - Front wheel gauge (middle of wheels)	1.93 m	6 ft 5 in
b11 - Rear wheel gauge (middle of wheels)	1.93 m	6 ft 5 in
Wa1 - Outer turning radius (with forks)	3.90 m	12 ft 1 in
b15- Inside turning radius	1.30 m	4 ft 4 in

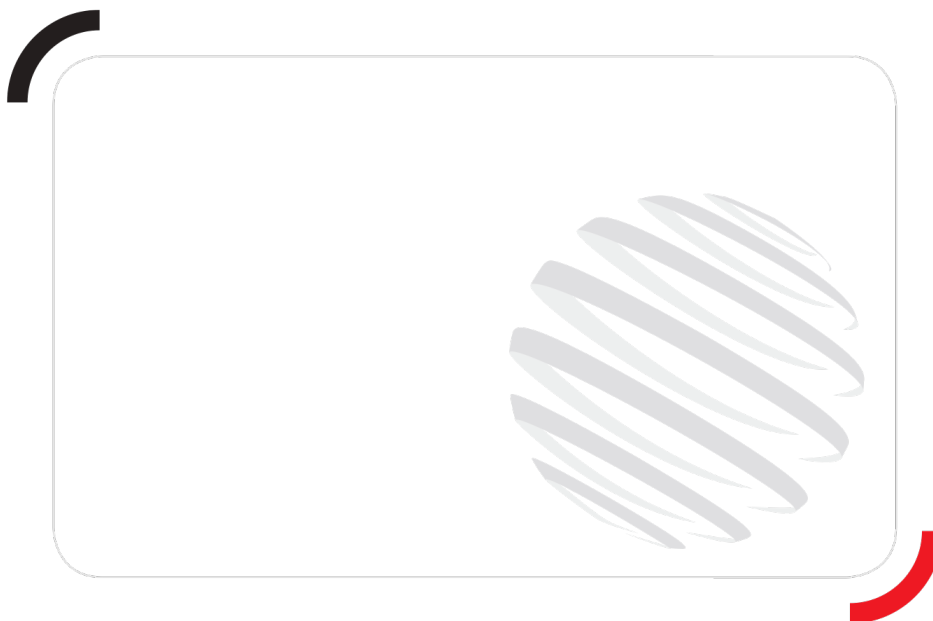


Rotation on lowered stabilisers with 365/1000 kg platform



Rotation on lowered stabilisers with 3D positive / negative





Siège Social
430 rue de l'Aubinière - 44150 Ancenis Cedex - France
Tel: +33(0)2 40 09 10 11 - Fax: +33 (0)2 40 09 10 97
www.manitou.com



This brochure describes versions and configuration options for Manitou products which may be fitted with different equipment. The equipment described in this brochure may be standard, optional or not available depending on version. Manitou reserves the right to change the specifications shown and described at any time and without prior warning. The manufacturer is not liable for the specifications given. For more information, contact your Manitou dealer. Non-contractual document. Product descriptions may differ from actual products. List of specifications is not comprehensive. The logos and visual identity of the company are the property of Manitou and may not be used without authorisation. All rights reserved. The photos and diagrams contained in this brochure are provided for information only.

MANITOU BF SA - Limited company with board of directors - Share capital: 39,547,824 euros - 857 802 508 RCS Nantes